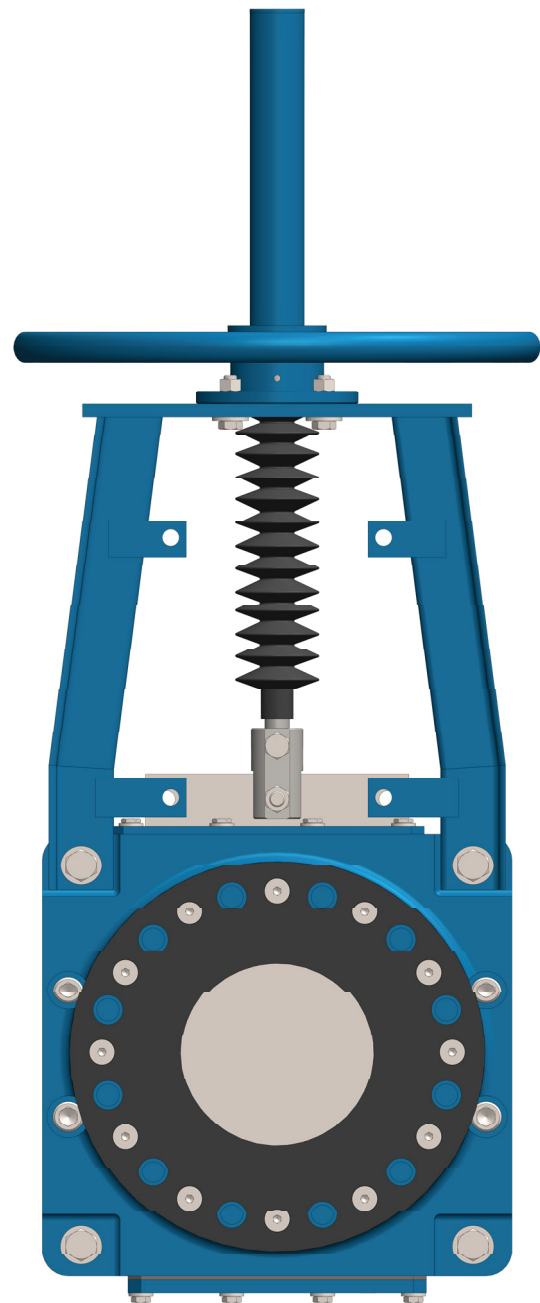
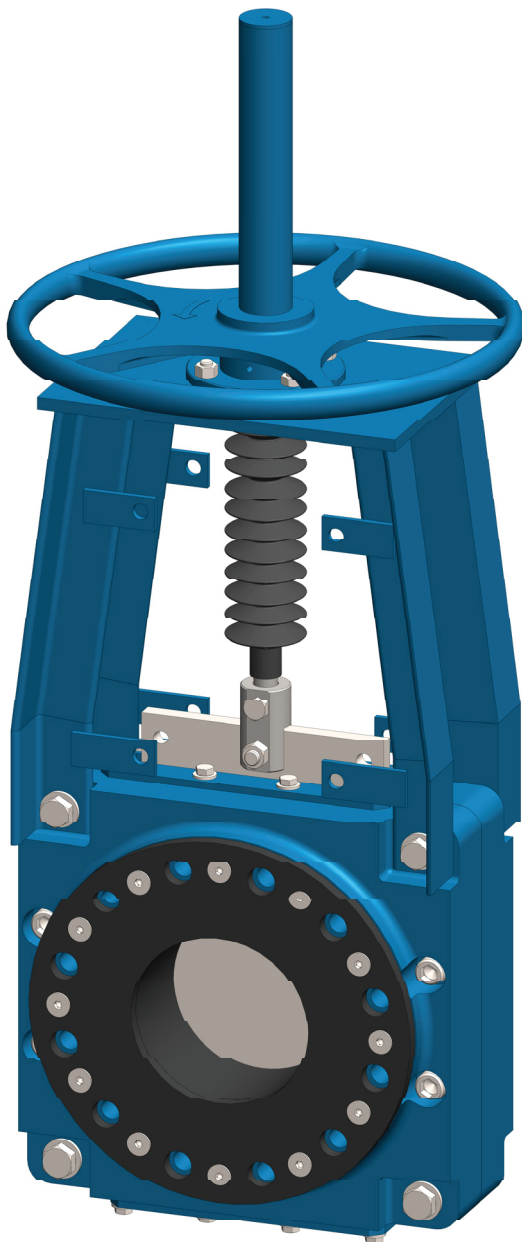


RHINO GATE™

SLURRY

RLB300HP

KNIFE GATE



rhinoflexvalves.in

SLURRY KNIFE GATE VALVES RLB300HP

RLB300HP is a bi-directional slurry valve, designed for high pressure slurry applications. Twin elastomer sleeves and push-through gate design facilitate self-cleaning and prevent media build up.

The cast Steel body is offered in a two-piece bolted flange style. When fully open, the valve is full bore, provides high flow rates with low pressure drop.

- Protective stem cover is standard in all models, increasing cycle life in hazardous environments.
- Fully encapsulated sleeve reinforcement and memory assist, guaranteeing bidirectional zero leakage performance.
- In the open position, the energized sleeves shield all metal components from direct contact with the flowing process media.
- Gate available in a wide range of corrosion resistant alloys to suit the pressure rating and application.
- The design provides unobstructed flow path, extending sleeve life and minimizing pressure drop across valve.
- Flanged two-piece bolted body allows for easy maintenance and is drilled and tapped to country standards.
- Optional bottom flush plate with tapped ports, allows for safe discharge of media and easy flush water connection.
- When mounted between pipeline flanges, sleeves are compressed. Thus creating a tight sealing and allowing the Gate to travel smoothly during Opening & Closing.
- Split superstructure helps in removal of complete Gate assembly only by removing pneumatic cylinder fasteners.

Industries

- Mining & Minerals
- Power
- Alumina
- Chemical

Technical Specifications

Size range *	DN80-DN600
Body style	Two piece bolted
End Connection	Wafer Flanged
Pressure rating	CWP-20 & CWP-50
Drilling *	ASME B16.5 #150 ASME B16.5 #300
Face to Face	Industry Standard
Design Std.	Manufacturer's Std.
Testing Std.	Manufacturer's Std.

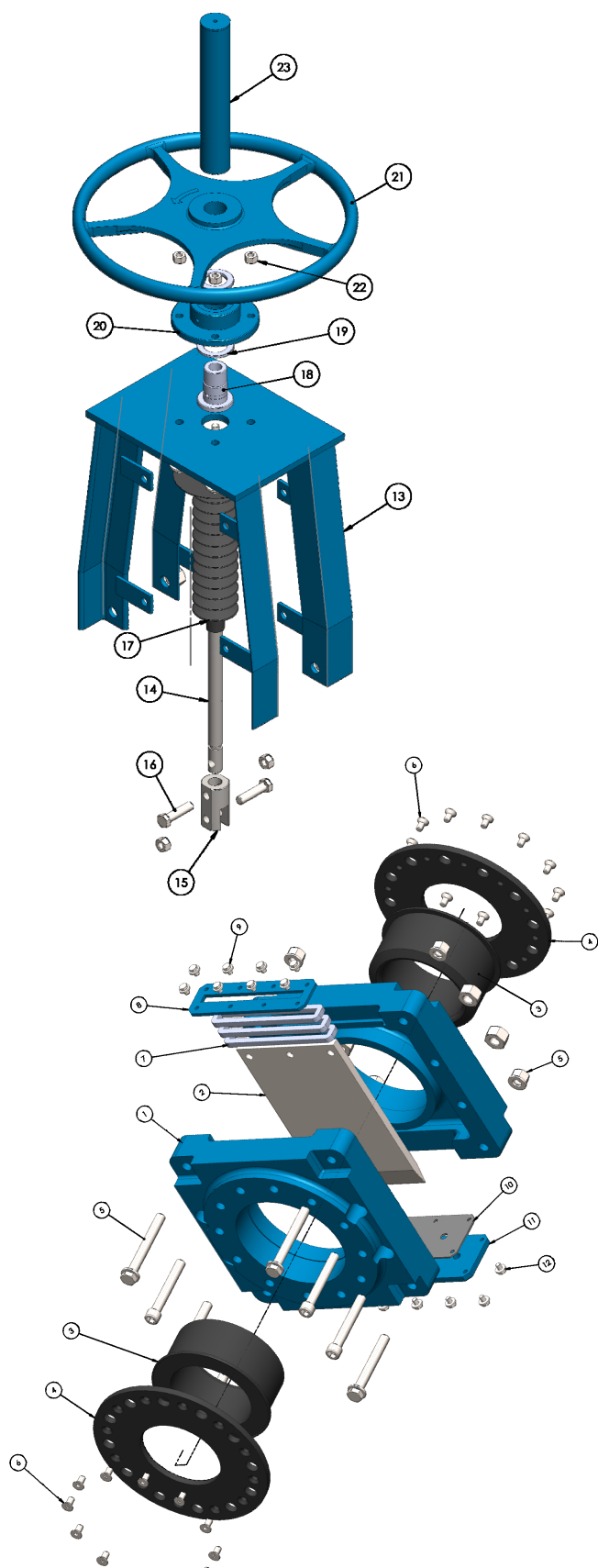
Standard MOC Option

Body *	WCB
Gate *	SS316 / 2205 / 17-4PH
Seat *	Natural Rubber
Stem *	SS304

***Other Materials on request**

SLURRY KNIFE GATE VALVES

RLB300HP

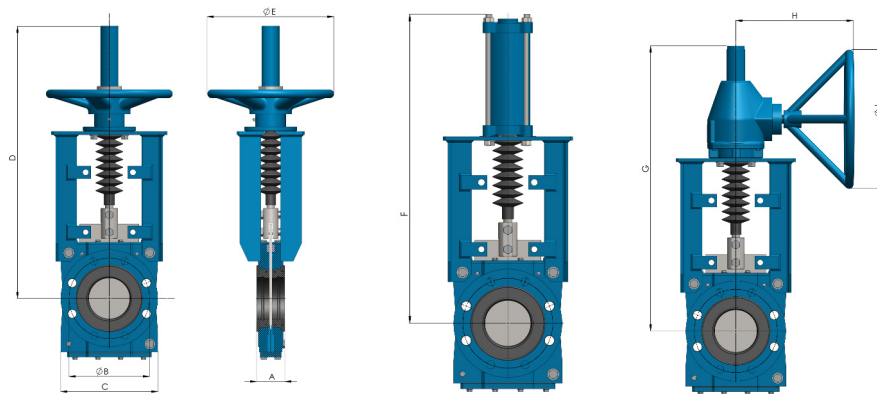


* Other Materials on request

Item No.	Description	Material of Construction
1	Body	WCB / CF8 / CF8M
2	Gate	SS316 / 2205 / 17-4PH
3	Seat	Natural rubber / EPDM
4	Seat Retainer	Carbon steel Rubber lined
5	Body mounting fasteners	CS / SS
6	Seat Retainer fasteners	CS / SS
7	Packing	PTFE with Quad ring
8	Gland Plate	Carbon Steel
9	Gland Plate mounting fasteners	CS / SS
10	Drain plate gasket (Body)	EPDM
11	Drain Plate(Gland)	Carbon steel
12	Fasteners (Drain Plate)	CS / SS
13	Super Structure	Carbon steel
14	Stem	SS304 / SS316
15	Clevis / Fork	SS304 / SS316
16	Fasteners (Clevis / Fork)	SS304 / SS316
17	Stem Bellows	Canvas / Leather
18	Stem Nut	Brass
19	Thrust Bearing	SS
20	BRG. Housing	Carbon Steel
21	Hand Wheel	CI / DI
22	Fasteners (Brig. housing)	Carbon Steel
23	Stem Cover	Carbon steel

SLURRY KNIFE GATE VALVES

RLB300HP



Dimensions in mm

Valve Size	A	*B	C	D	E	F	G	H	J
80	176.00	168.30	266.70	520.00	400.00	823.70	720.00	225.00	300.00
100	176.00	200.00	298.50	692.00	400.00	930.60	810.00	225.00	300.00
150	185.00	269.90	362.00	854.00	500.00	1149.80	930.00	240.00	300.00
200	185.00	330.20	425.50	1004.00	500.00	1388.10	1100.00	240.00	500.00
250	226.00	387.40	510.30	-	-	1565.00	1250.00	260.00	500.00
300	258.00	450.80	571.20	-	-	1848.00	1450.00	395.00	500.00
350	258.00	514.40	749.30	-	-	2088.50	1660.00	395.00	500.00
400	279.00	571.50	825.50	-	-	2240.70	1870.00	430.00	600.00
450	321.00	628.60	882.70	-	-	2472.80	2000.00	460.00	600.00
500	367.00	685.80	946.20	-	-	2725.80	2180.00	490.00	600.00
600	370.00	812.80	1130.30	-	-	2946.30	2625.00	540.00	600.00

Dimensions in inch

Valve Size	A	*B	C	D	E	F	G	H	J
3	6.92	6.62	10.50	20.48	16.00	32.43	28.34	8.86	12.00
4	6.92	7.87	11.75	27.27	16.00	36.64	31.88	8.86	12.00
6	7.28	10.62	14.25	33.61	20.00	45.27	36.61	9.45	12.00
8	7.28	13.00	16.75	39.55	20.00	54.65	43.30	9.45	20.00
10	8.91	15.25	20.09	-	-	61.62	49.21	10.24	20.00
12	10.17	17.75	22.49	-	-	72.76	57.08	15.55	20.00
14	10.22	20.25	29.50	-	-	82.22	65.35	15.55	20.00
16	10.98	22.50	32.50	-	-	88.22	73.62	16.93	24.00
18	12.65	24.75	34.75	-	-	97.35	78.74	18.11	24.00
20	14.44	27.00	37.25	-	-	107.31	85.82	19.30	24.00
24	14.56	32.00	44.50	-	-	116.00	103.34	21.26	24.00

* In conformance with ASME B16.5, Class 300 for sizes NPS 3 (DN80) through NPS 24 (DN600).

RHINOFLEX INDIA PRIVATE LIMITED

SM-430, 2nd Gate Industrial Estate Near Flowserve Microfinish Gokul Road, Hubballi-580023 Karnataka, India

Web: www.rhinoflexvalves.in

Email: sales@rhinoflexvalves.in